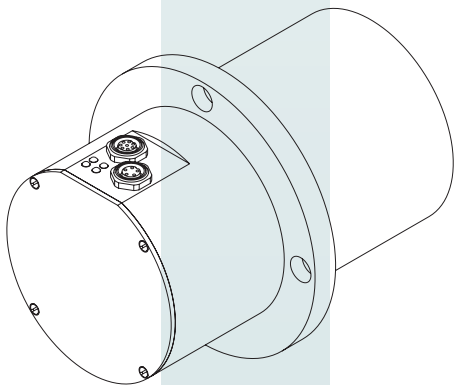


INPROX sensors



advanced **color** recognition **system**
industrial quality & process control

MLC800
long distance color sensor



INPROX sensors

industrial grade environmental duty

With a sturdy aluminum housing the MLC800 series color system is engineered to resist difficult production environments where temperature, dirt and other typical contaminants may impede performance.

Color Scope 3© software

This advanced software platform allows the customer to control all aspects of color, contrast, power, event and output; down to the ground level of operations.

open file network

INPROX Sensors offers an open file network that can run in real time and deliver unlimited individual files for an unprecedented level of access and customization.

easy to set up

Color Scope 3 offers hassle-free installation and communication: RS232/USB software setup.+ PLC interfaces; and EEPROM stand alone operations after initial program.

stores data for up to 15 colors at a time

With the ability to sort and recognize over 10,000 colors variations the MLC800 EEPROM holds individual data for up to 15 colors or frequency control for color contrast control. There is no need to reprogram or have operators teach-in time consuming color data.

(for up to 255 individual colors try our MLC255 system)



INPROX sensors

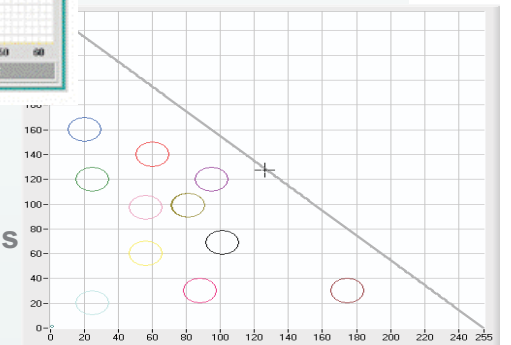
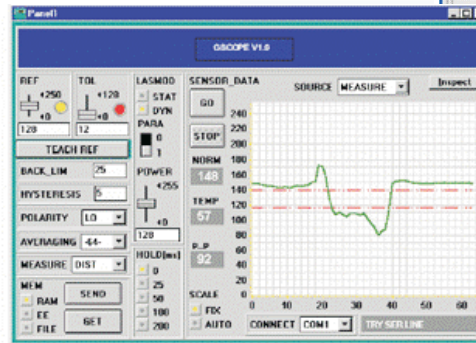
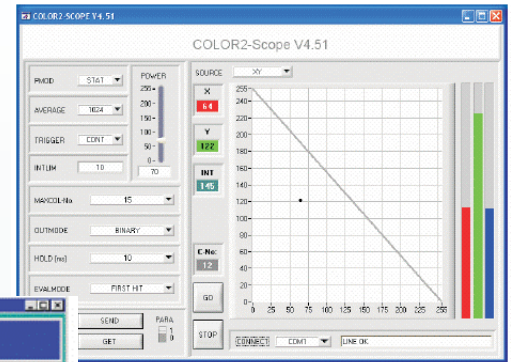
28 State Street
Suite 1100
Boston, MA 02109
877 INPROX 7
877 467 7697
617 573 5158
617 507 2665 fax
sales@inproxsensors.com

www.inproxsensors.com

INPROX sensors

advanced color recognition system

multi-function graphing platform



5 Event Modes

- ✦ 15 individual color recognition capabilities (EEPROM)
- ✦ unlimited individual color recognition capabilities (File)
- ✦ contrast frequency control for difficult color bleed applications
- ✦ intensity value recognition independent of color change
- ✦ sort sequence & trigger event capabilities

8 recognition-setup modes

- « XY
- « RGB (multiple reads)
- « Raw R (contrast structural control)
- « Raw G (contrast structural control)
- « Raw B (contrast structural control)
- « INT (intensity/gloss control)



Specifications Overview

- ¥ 28 kHz maximum response speed
- ¥ RS232/USB connection via color scope software
- ¥ 32,678 scans per second
- ¥ 8 bit A/D conversion
- ¥ Real-Time or EEPROM intellisense monitoring

color scope 3© software included

INPROX sensors

advanced color recognition system

Electrical data	Supply voltage	12-30 VDC, reverse polarity and overload protected
	Current consumption	typ. 180 mA
	EMC test	acc. to IEC - 801
	Interface	RS232, parameterizable under Windows®
	Averaging	over max. 32768 values
	Colour memory	non-volatile EEPROM with all parameters
	Connection to SPC	8-pin flange socket (Binder series 712)
	Connection to PC	5-pin flange socket (Binder series 712)
Measuring data	Target distance	typ. 50 mm-800 mm
	Light spot size at $\varnothing 50\text{mm}$ in 500mm	MLC800
	Reproduceability	in the x,y colour range 1 digit at 8 bit A/D conversion (shown with Color-Scope)
Light source	White light LED	modulated 100 kHz
Receiver	3-colour photodiode	(red, green, blue), RGB- and intensity evaluation
Outputs	OUT 0 to OUT 3	wiring see connection table
	Switching frequency	max. 2 kHz with 15 teach-in colours
		max. 5 kHz with 1 teach-in colours,
		28 kHz with contrast detection (intensity values)
	Switching current	max. 100 mA, short-circuit protected
	Pulse lengthening	adjustable under Windows® 0 ms ... 100 ms
Switching state display	Visualisation by means of 4 yellow LEDs	
Data on ambient conditions	Operating temp.	-20°C ... +55°C
	Storage temp.	-20°C ... +85°C
	Ambient light	up to 5000 Lux
	Protection class	IP64
Housing	Aluminium	anodized in blue

