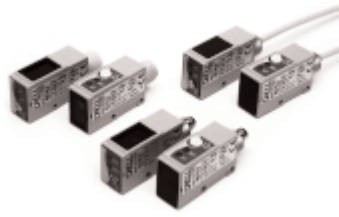
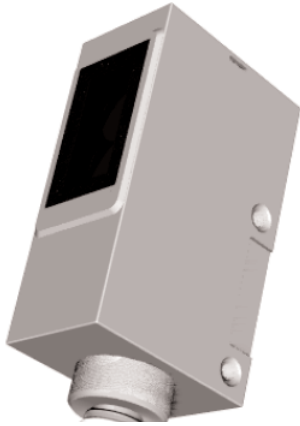


PX Main Line Transmitter 8m Range



PX (8m) range Cubic Housing transmitter with check

visible red beam

general harsh duty with space limitations

2 wire 10-30VDC

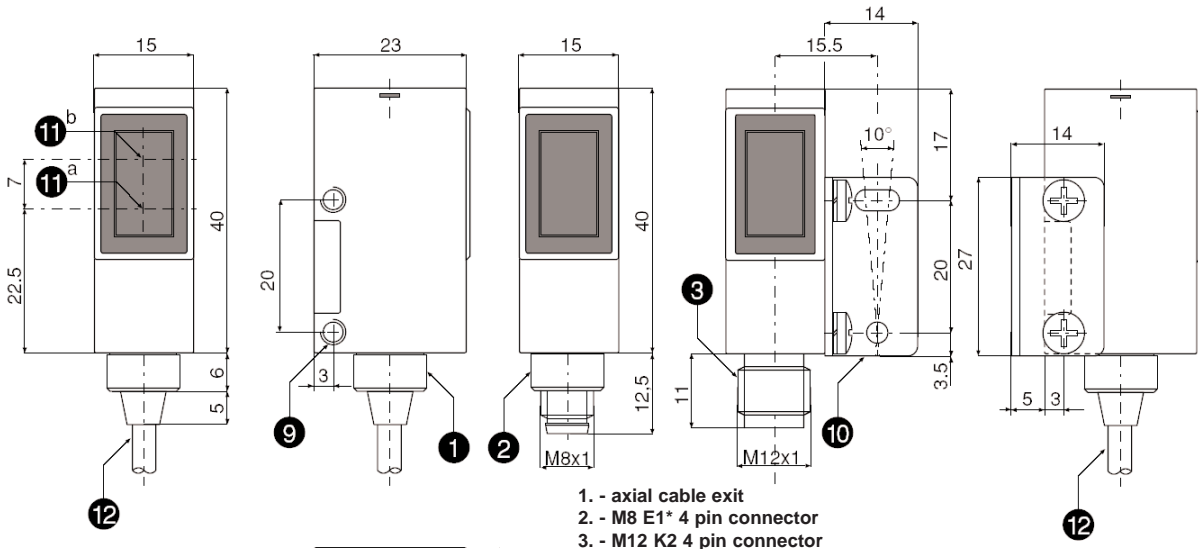
fast response time .75ms

NPN and PNP to reduce stock

M12 & M8 connectors available

IP65 protection degree

easy installation & precise beam



- 1. - axial cable exit
- 2. - M8 E1* 4 pin connector
- 3. - M12 K2 4 pin connector
- 9. - holes for M3 screws
- 10. -bracket included
- 11. -optical axis position
- 12. - cable 4x0.14mm2, 3.75mm diameter, PVC, 2m

Parts Matrix

photo electric sensor series	P	P
transmitter with check	TC	TC
8m max range	008	008
cubic housing	C	C
ABS body	AO1	AO1
straight-axial optics (not shown in drawings)	T	T
90 degree-radial optics	R	R
E1 4 Pin 8mm connector	E1	E1
2m standard integrated cable	M1	M1
K2 4 Pin 12mm connector	K2	K2

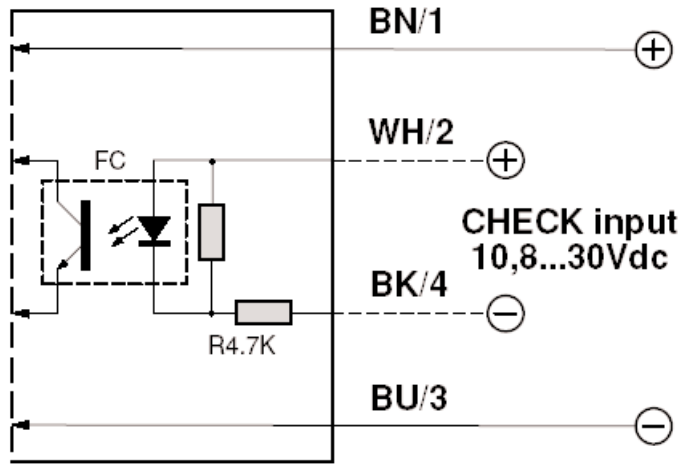
PARTS INDEX

PTC008CAO1TM1
PTC008CAO1TE1
PTC008CAO1TK2
PTC008CAO1RM1
PTC008CAO1RE1
PTC008CAO1RK2

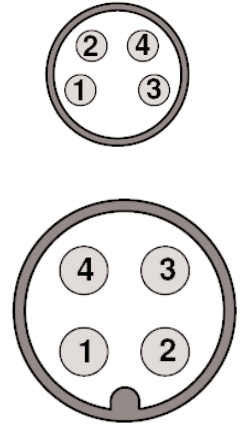
SPECIFICATIONS

AXIAL OPTICS M1
AXIAL OPTICS E1
AXIAL OPTICS K2
RADIAL OPTICS M1
RADIAL OPTICS E1
RADIAL OPTICS K2

Wiring Diagram



E1 & K2 Connector Diagram



TECHNICAL SPECIFICATIONS

Nominal Sensing Distance S_n	8m
Emission	visible red 660
Differential Travel	10%
Tolerance	5%
Operating Voltage U_b	10-30VDC
Ripple U_{pp}	5mA
No-load Supply	<35mA max
Load Current Max	100mA
Voltage Drop U_d	1.2V max.(100mA)
Response Time	>2mS
Switching Frequency	500Hz (.75ms)
Time Delay before availability	200ms
Supply Electrical Protections	polarity reversal, transient
Output Electrical Protections	short circuit protection (autoreset)
Ambient Temperature T_a	-25--+70C
Tempearture Drift	+/- 10% SR
Protection Degree (DIN 40 050)	IEC IP65
LED Indicators	RED
Housing Material	ABS
Lenses Material	acrylic