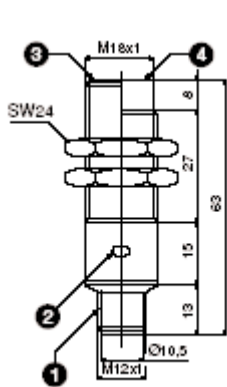


# M18 18mm Inductive Stainless Steel Housing

## 5mm/8mm ranges Harsh Duty IP 68



- 1 K1 M12 4 pin 12mm connector
- 2 LED status indicator (NO output energized)
- 3 Shielded version
- 4 Unshielded version

M18 18mm Harsh Duty IP68 Inductive Proximity Sensor

5 mm shielded range

8 mm unshielded range

3 wire 10-30VDC

immersion proof sealing

2 meter standard integrated cable

IP68 ultra protection degree double enclosure

protection from electrical damages

stainless steel housing

### Parts Matrix

inductive sensor series	X	X
M18 18mm diameter body	18	18
harsh duty -standard ranges	P	P
stainless steel	S	S
3 wire device	3	3
PNP output	P	P
NPN output	N	N
NO/NC normally open/normally closed	3	3
shielded	S	
unshielded		U
M12 4 Pin 12mm connector	K1	K1
range (mm)	5mm	8mm
load current	400mA	400mA

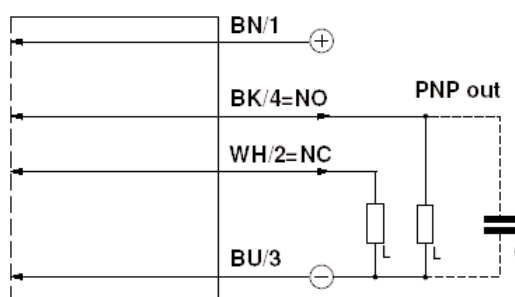
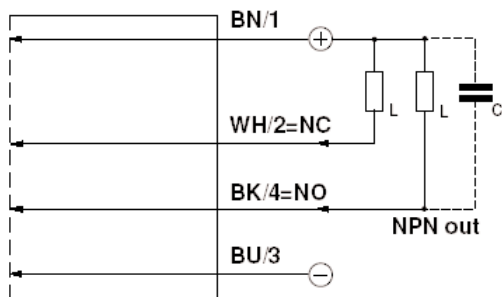
### PARTS INDEX

X18PS3P3SK1  
X18PS3P3UK1  
X18PS3N3SK1  
X18PS3N3UK1

### SPECIFICATIONS

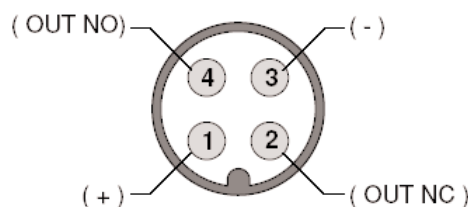
PNP NO/NC SHIELDED K1  
PNP NO/NC UNSHIELDED K1  
NPN NO/NC SHIELDED K1  
NPN NO/NC UNSHIELDED K1

Wiring Diagram



TECHNICAL SPECIFICATIONS

K1 Connection Diagram



Nominal Sensing Distance $S_n$	5 mm	8 mm
Operating Distance	-	-
Differential Travel	10% Typ	10% Typ
Repeat Accuracy R	5%	5%
Operating Voltage $U_b$	10-30VDC	10-30VDC
Ripple $U_{pp}$	<10% $U_b$	<10% $U_b$
No-load Supply	18mA	18mA
Load Current $I_a$	<400mA	<400mA
Leakage Current	<10uA	<10uA
Voltage Drop $U_d$	1.2V max.	1.2V max.
Output Type	PNP or NPN NO/NC	PNP or NPN NO/NC
Switching Frequency	1KHz	1KHz
Time Delay Before Availability $t_v$	100ms	100ms
Supply Electrical Protections	polarity reversal, transient	polarity reversal, transient
Output Electrical Protections	short circuit protection (autoreset)	short circuit protection (autoreset)
Ambient Temperature $T_a$	-25--+75C	-25--+75C
Temperature Drift	+/- 10% SR	+/- 10% SR
Protection Degree (DIN 40 050)	IEC IP68	IEC IP68
LED Indicators	Yellow (NO output energized)	Yellow (NO output energized)
Housing Material	stainless steel	stainless steel
Sensing Face Material	PSU	PSU
Tightening Torque	30Nm	30Nm
Weight (approximate)	70g (K1)	70g (K1)